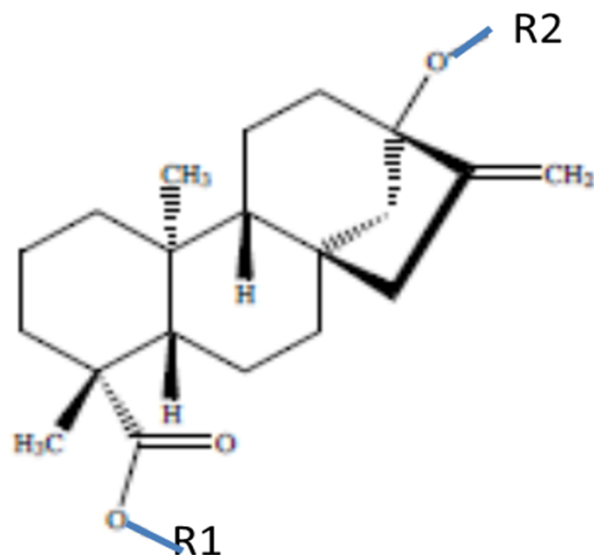


Rebaudiosideの構造



Sweetener	R-Groups in Backbone Figure Above		Formula	Molecular Weight (g/mol)	Potency *
	R1	R2			
Rebaudioside A	β -glc-	(β -glc) 2- β -glc-	C ₄₄ H ₇₀ O ₂₃	967.01	200
Rebaudioside B	H	β -glc) 2- β -glc-	C ₃₈ H ₆₀ O ₁₈	804.88	150
Rebaudioside C	β -glc-	(β -glc, α -rha)- β -glc-	C ₄₄ H ₇₀ O ₂₂	951.01	30
Rebaudioside D	β -glc- β -glc-	(β -glc) 2- β -glc-	C ₅₀ H ₈₀ O ₂₈	1129.15	221
Rebaudioside E	β -glc- β -glc-	β -glc- β -glc-	C ₄₄ H ₇₀ O ₂₃	967.01	174
Rebaudioside F	β -glc-	(β -glc, β -xyl)- β -glc-	C ₄₃ H ₆₈ O ₂₂	936.99	200
Rebaudioside M	(β -glc) 2- β -glc-	(β -glc) 2- β -glc-	C ₅₆ H ₉₀ O ₃₃	1291.3	250

glc = glucose; rha = rhamnose; xyl = xylose; * Potency from